

# STEK Ti401/480 Pro

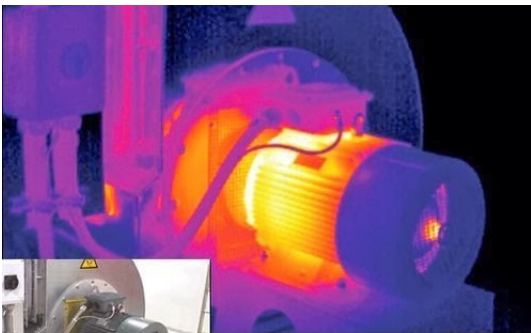
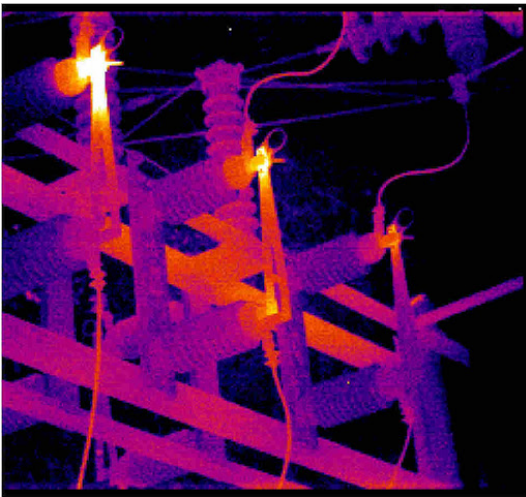
384 X 288 / 640 x 480 Pixel Detector  
With Super pixel imposition of  
768/976 / 1280 / 960



## STEK Ti 401 / 480 Pro

### professional handheld infrared camera

- 384×288/640×480 pixel detector, can get super pixel to 768×576/1280×960
- Hand-automatic lens, can automatically identify
- 4-inch bright touch screen, graphical interface operation
- 5 million pixels visible light, dual LED fill light
- With infrared, visible light, picture-in-picture, dual-band image fusion mode
- Laser ranging can automatically focus according to the target distance
- With image and video function
- Real-time image transmission through wifi connection, and remote APP can control and analyze
- Adapted to Bluetooth headset to transmit audio
- 2m anti-drop



**MODEL**
**Ti-401 Pro**
**Ti-480 Pro**

Type	Uncooled focal plane micro-thermal	
Resolution	384×288	640×480
Wavelength range	8~14um	
Thermal sensitivity	≤0.05°C	
Frame rate	50/60Hz	
Lens	Automatic Identification	
Focusing method	Manual/electric/automatic	
FOV	25°×19°	
Focusing range	0.1m~∞	
Monitor	4.0" TFT LCD, Color, with capacitive touch screen	
Resolution	640×480	
Backlight	High brightness sunlight screen	
Palette (pattern)	11 color codes can be selected	
Image adjustment	automatic / manual	
Spatial resolution	1.12mrad	0.67mrad
Super pixel function	768×576	1280×960
Display method	Infrared, visible light, picture-in-picture, dual-band fusion image (DSIE)	
Digital zoom	1~4x	
Visible light camera	5 million pixels	
Video output	HDMI	
Anchor point display	Laser positioning points are displayed on the image	
Memory	TF card	
Video recording	Yes, the general video format storage of this machine, timing storage can be set, support infrared, visible light, fusion mode	
Image storage	Yes, infrared image JPEG format, with infrared temperature data; visible light, fusion JPEG format storage	
Note	60-second voice recording, stored with the image, optional text annotation	
Temperature range	-20°C~+650°C, can be extended to 1200°C	
Temperature accuracy	±2°C or ±2% of measured value, whichever is greater	
Temperature measurement mode	Real-time 4 movable points (the hottest and coldest points are independent), 3 movable areas (the highest temperature, the lowest temperature capture, average temperature measurement), line temperature measurement, isothermal analysis, temperature difference measurement, temperature alarm (sound, color)	
Temperature correction	Automatic (short time, long time, custom) / manual	
Atmospheric window correction	Corrected according to infrared window transmittance	
Atmospheric transmittance correction	Automatic, according to the input target distance, relative humidity, ambient temperature	
Background temperature correction	Automatically correct according to the entered temperature	
Emissivity correction	The emissivity is adjustable from 0.01 to 1.0 (in increments of 0.01), or the emissivity can be corrected through a predefined material emissivity meter	
Battery	Rechargeable lithium battery, replaceable	
Battery working time	4 hours	
Battery charging time	Fast charging function (external charger), can be charged randomly	
Power management	Automatic sleep, automatic shutdown	
Overall size	W116×D175×H278mm	
Total Weight	≤1.1kg (including battery)	
Handrail	Yes, can be installed on both sides	
tripod	1/4"-20-UNC	
Memory card slot	TF card connector	
Data interface	Mini-USB Type C, picture/video transmission	
Video interface	Micro-HDMI	
Power connector	Mini-USB Type C	
Laser	Laser rangefinder	
Fill light	2 LED	
Microphone	Yes	
Buzzer	Yes	
WiFi	Real-time image transmission, can be operated through the mobile APP control menu, stored images can be analyzed to generate reports, applicable to Android & ios systems	
Bluetooth module	Audio output/input (Bluetooth headset)	
GPS	Yes	
Electronic compass	Yes	
Set up	Date/time, temperature unit °C/°F/K, language, LCD backlight, IP address	
Operating temperature	-15°C~+50°C	
storage temperature	-40°C~+70°C	
Humidity	≤95% non-condensing	
Protection level	IP54	
Vibrate	2g, GB/T2423.10 (IEC60068-2-6)	
Rush	30g, GB/T2423.5 (IEC60068-2-27)	
Fall	2m, GB/T2423.8 (IEC60068-2-32)	
Performance	GB/T19870-2005	
Safety	GB4943.1-2011	
EMC	Meet CE requirements	
RoHS	2011/65/EC	
Laser	IEC60825-1-2014	